



# SUSQUEHANNA RIVER BASIN COMMISSION

4423 North Front Street • Harrisburg, Pennsylvania 17110-1788

(717) 238-0423 Phone • (717) 238-2436 Fax

[www.srbc.net](http://www.srbc.net)

## TECHNICAL GUIDANCE FOR LOW FLOW PROTECTION RELATED TO WITHDRAWAL APPROVALS Under Policy No. 2012-01

December 14, 2012

Last Revised: January 19, 2023

### LIST OF ATTACHMENTS

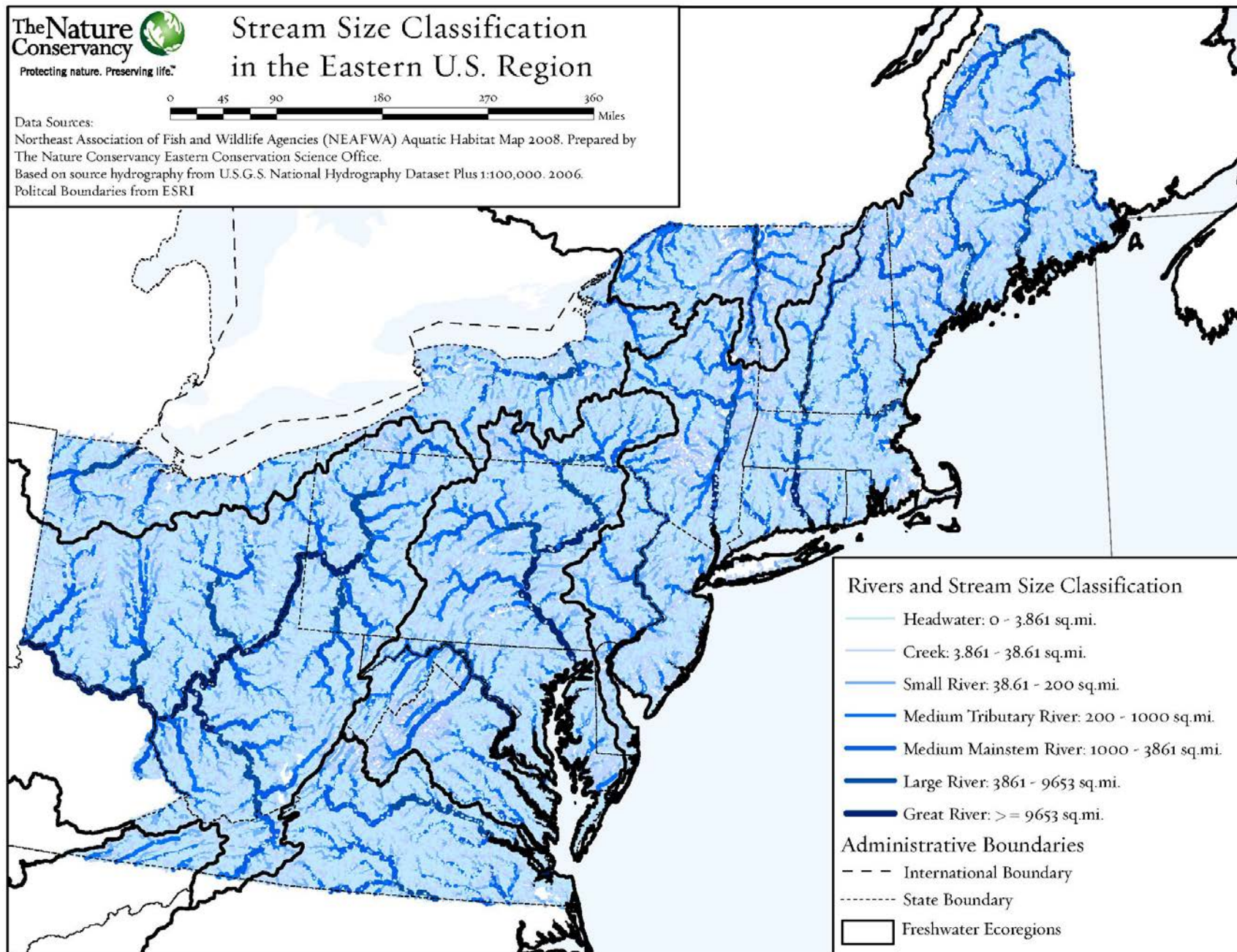
<b>Attachment A</b>	TNC Flow Recommendations for the Susquehanna River Ecosystem
<b>Attachment B</b>	Northeast Aquatic Habitat Classification System (NEAHCS) Stream Size Classes
<b>Attachment C1</b>	Aquatic Resource Classes in the Susquehanna River Basin
<b>Attachment C2</b>	Aquatic Resource Classes in the Chemung Subbasin
<b>Attachment C3</b>	Aquatic Resource Classes in the Upper Susquehanna Subbasin
<b>Attachment C4</b>	Aquatic Resource Classes in the West Branch Susquehanna Subbasin
<b>Attachment C5</b>	Aquatic Resource Classes in the Middle Susquehanna Subbasin
<b>Attachment C6</b>	Aquatic Resource Classes in the Juniata Subbasin
<b>Attachment C7</b>	Aquatic Resource Classes in the Lower Susquehanna Subbasin
<b>Attachments D and E</b>	United States Geological Survey (USGS) Reference Stream Gaging Stations and Monthly Percent Exceedance (Px) Flow Values (computed using entire period of record through March 2020) ( <a href="#">link</a> )

**Attachment A. TNC Flow Recommendations for the Susquehanna River Ecosystem**

**Table 5.2 Flow recommendations for the Susquehanna River ecosystem.**

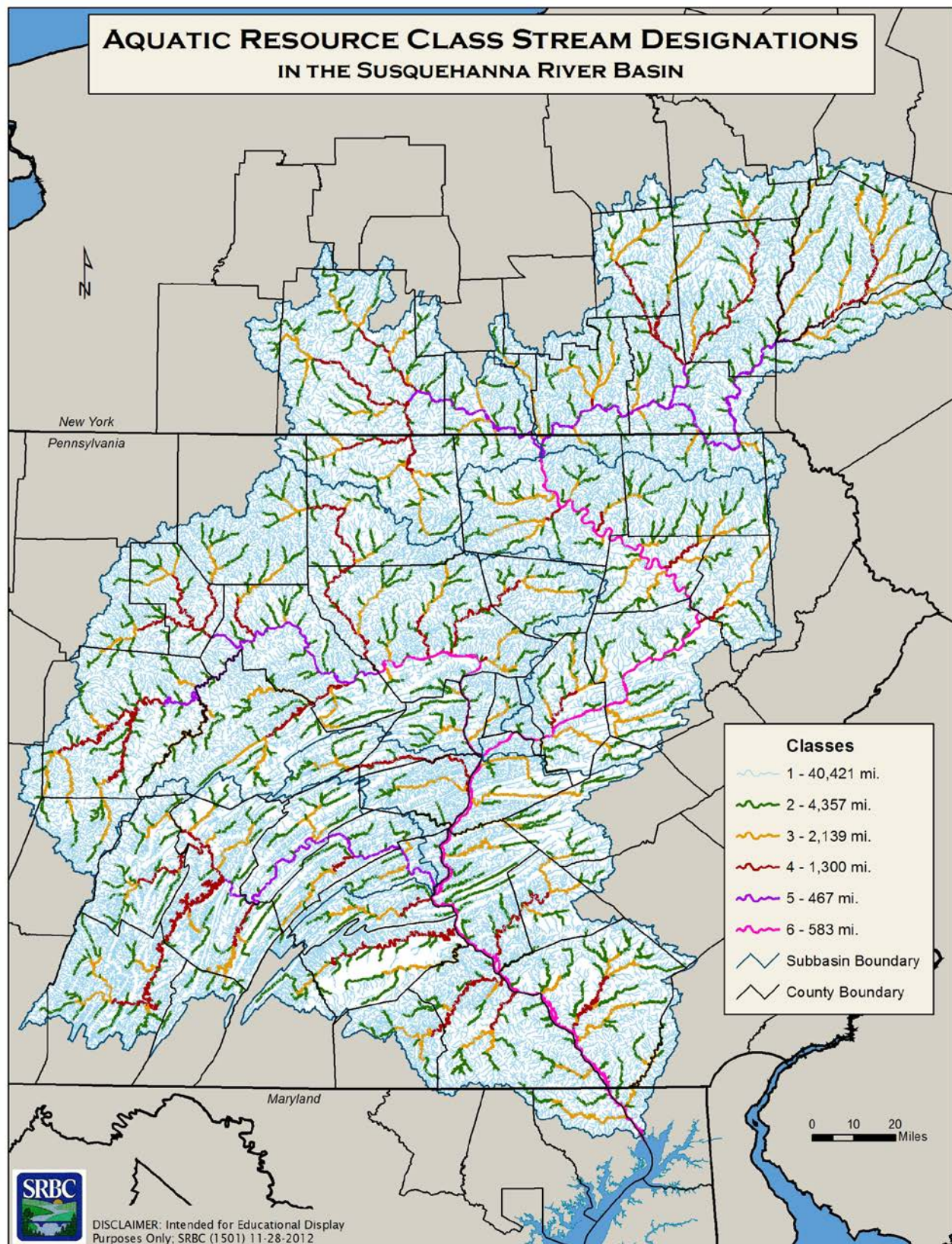
Season	Flow Component	Flow Statistic	Flow Recommendations		
			Headwater streams < 50 sq mi	Streams and small rivers (50 – 200 sq mi)	Major tributaries and mainstream (>200 sq mi)
<b>Annual and Interannual Events</b>	High Flows	Large flood	Maintain magnitude and frequency of 20-yr flood	Same for all streams	Same for all streams
		Small flood	Maintain magnitude and frequency of 5-yr flood	Same for all streams	Same for all streams
		Bankfull	Maintain magnitude and frequency of 1 to 2-yr high flow event	Same for all streams	Same for all streams
<b>All Months</b>	High flows	Monthly Q10	< 10% change to magnitude of monthly Q10	Same for all streams	Same for all streams
	Seasonal flows	Monthly Median	Between 45 <sup>th</sup> and 55 <sup>th</sup> percentiles	Same for all streams	Same for all streams
		Monthly Range	≤ 20% change to area under curve between Q10 and Q75	Same for all streams	Same for all streams
	Low flows	Monthly Low Flow Range	No change to area under curve between Q75 and Q99	≤ 10% change to area under curve between Q75 and Q99	≤ 10% change to area under curve between Q75 and Q99
		Monthly Q75 Monthly Q95	No change	No change	No change
<b>Fall</b>	High flows	Frequency of events > Monthly Q10	NA	NA	Maintain 1-5 events
<b>Summer</b>		Frequency of events > Monthly Q10	Maintain 2-8 events	Maintain 2-8 events	Maintain 2-8 events

*Attachment B. Northeast Aquatic Habitat Classification System (NEAHCS) Stream Size Classes*



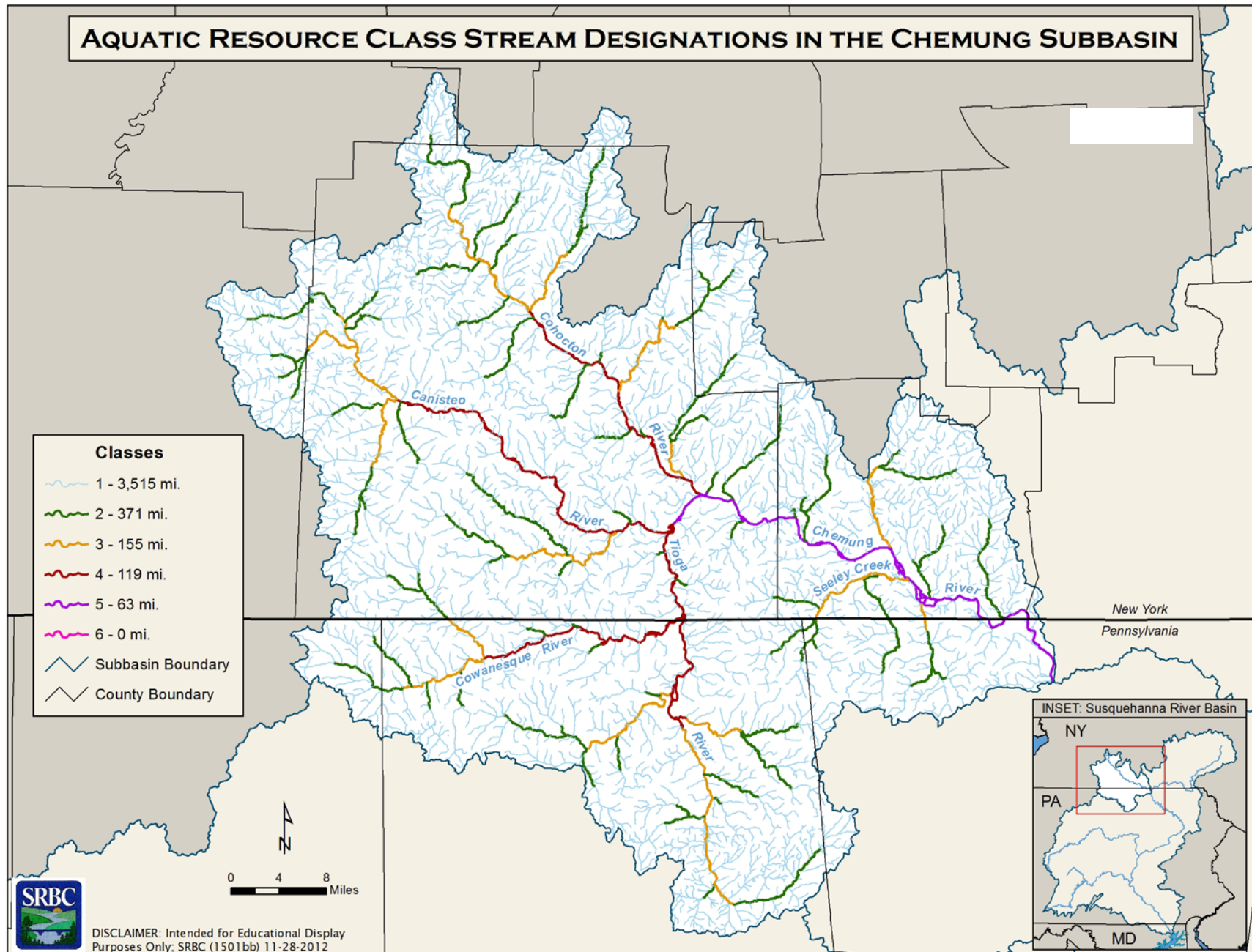


*Attachment C1. Aquatic Resource Classes in the Susquehanna River Basin*

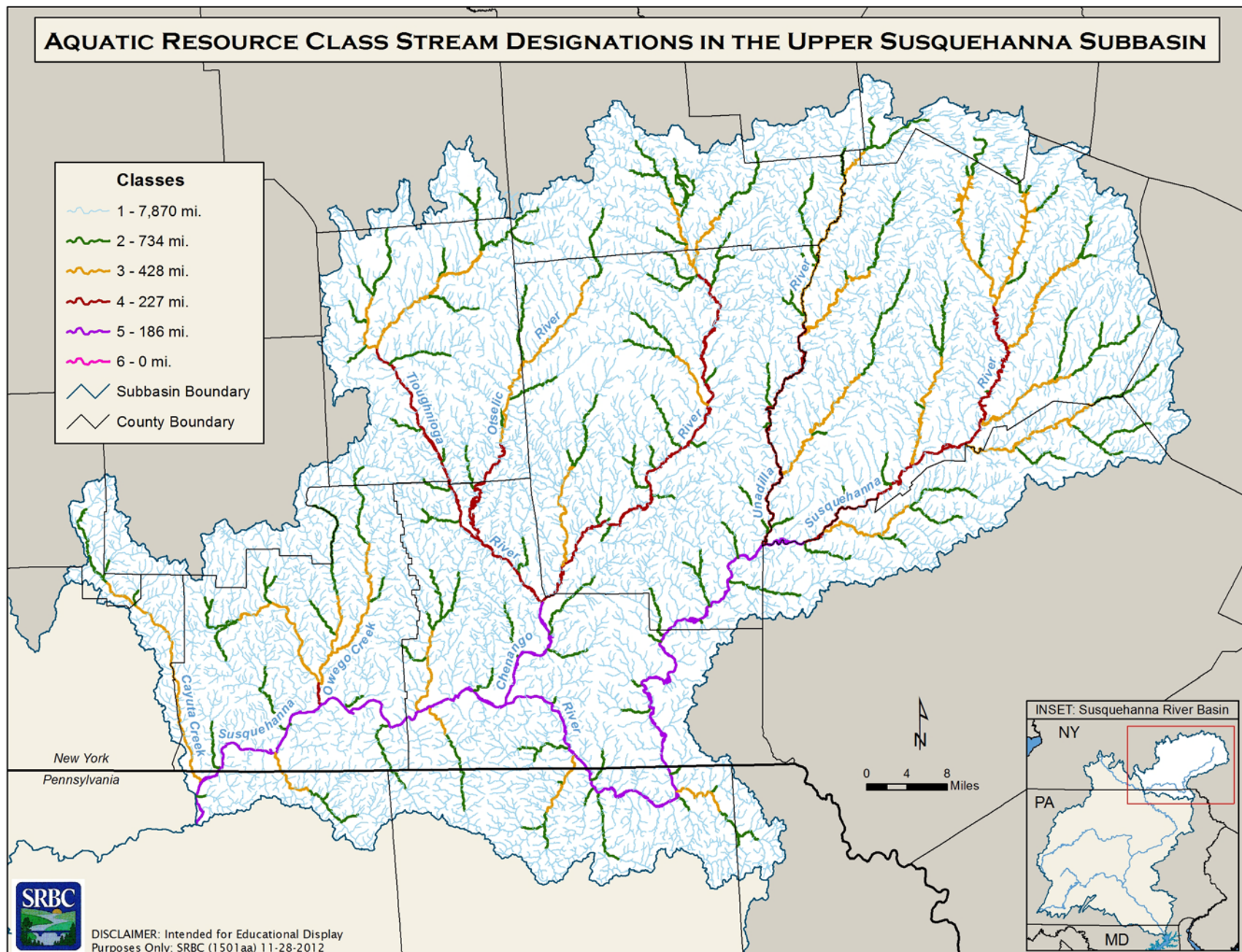




Attachment C2. Aquatic Resource Classes in the Chemung Subbasin

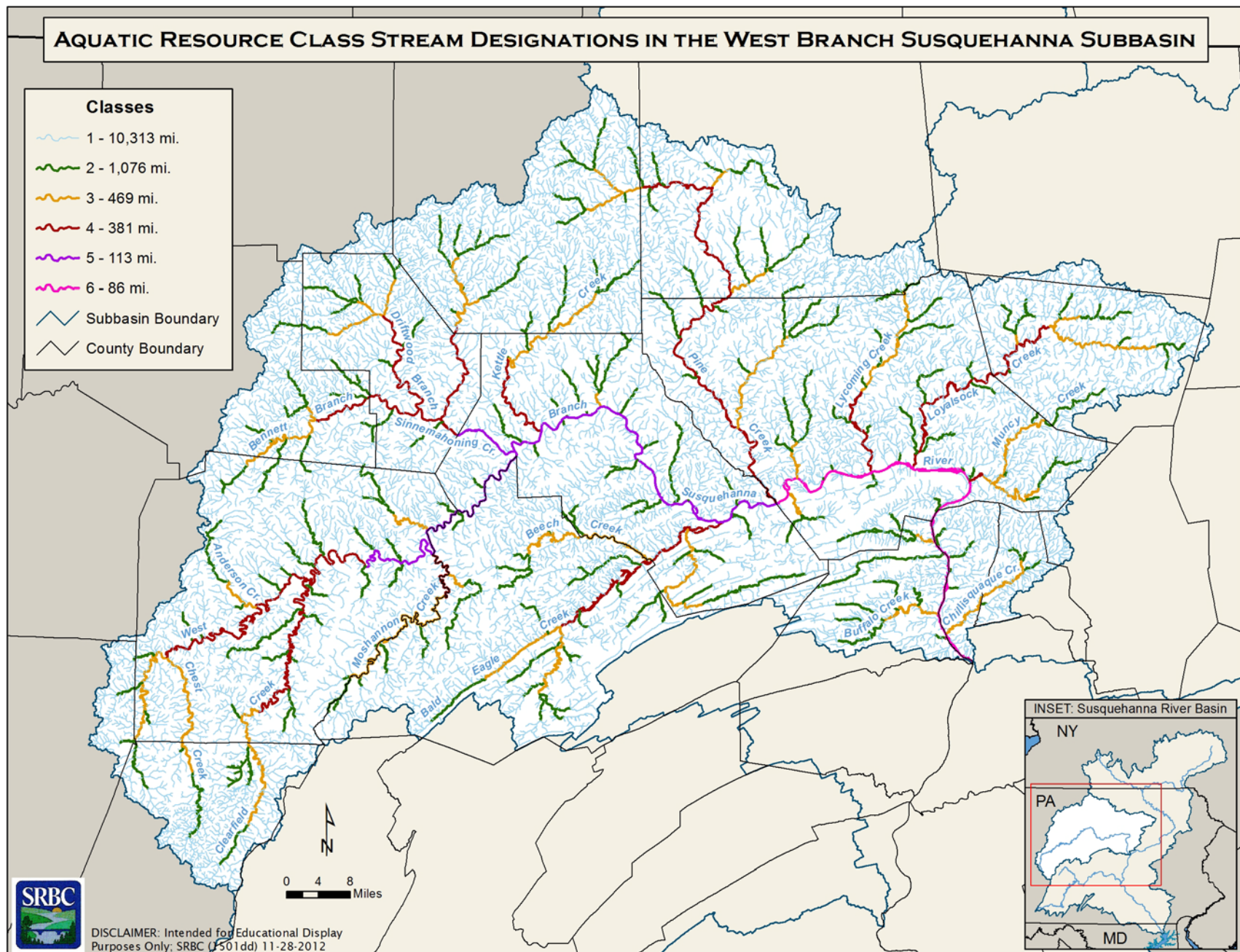


Attachment C3. Aquatic Resource Classes in the Upper Susquehanna Subbasin

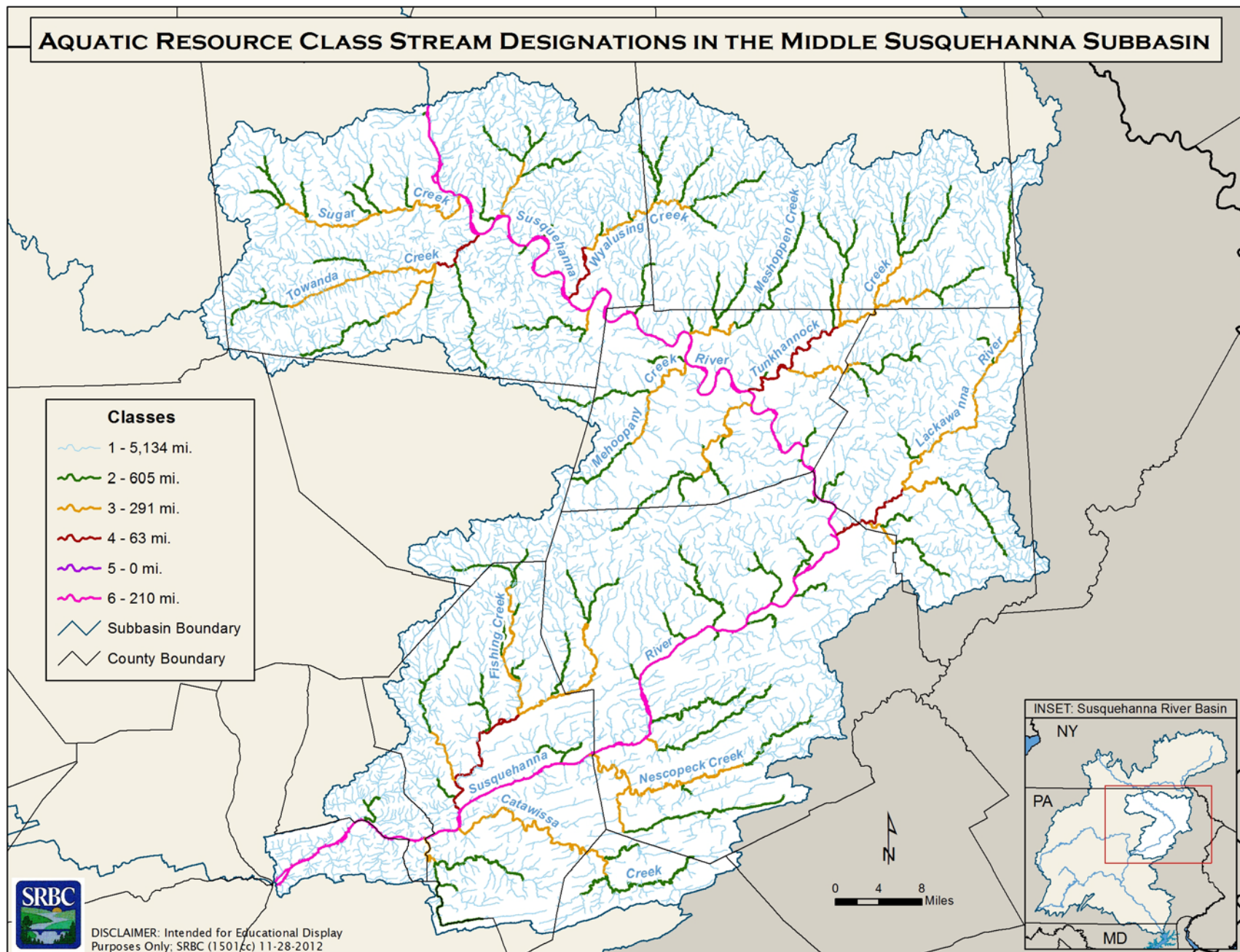




Attachment C4. Aquatic Resource Classes in the West Branch Susquehanna Subbasin

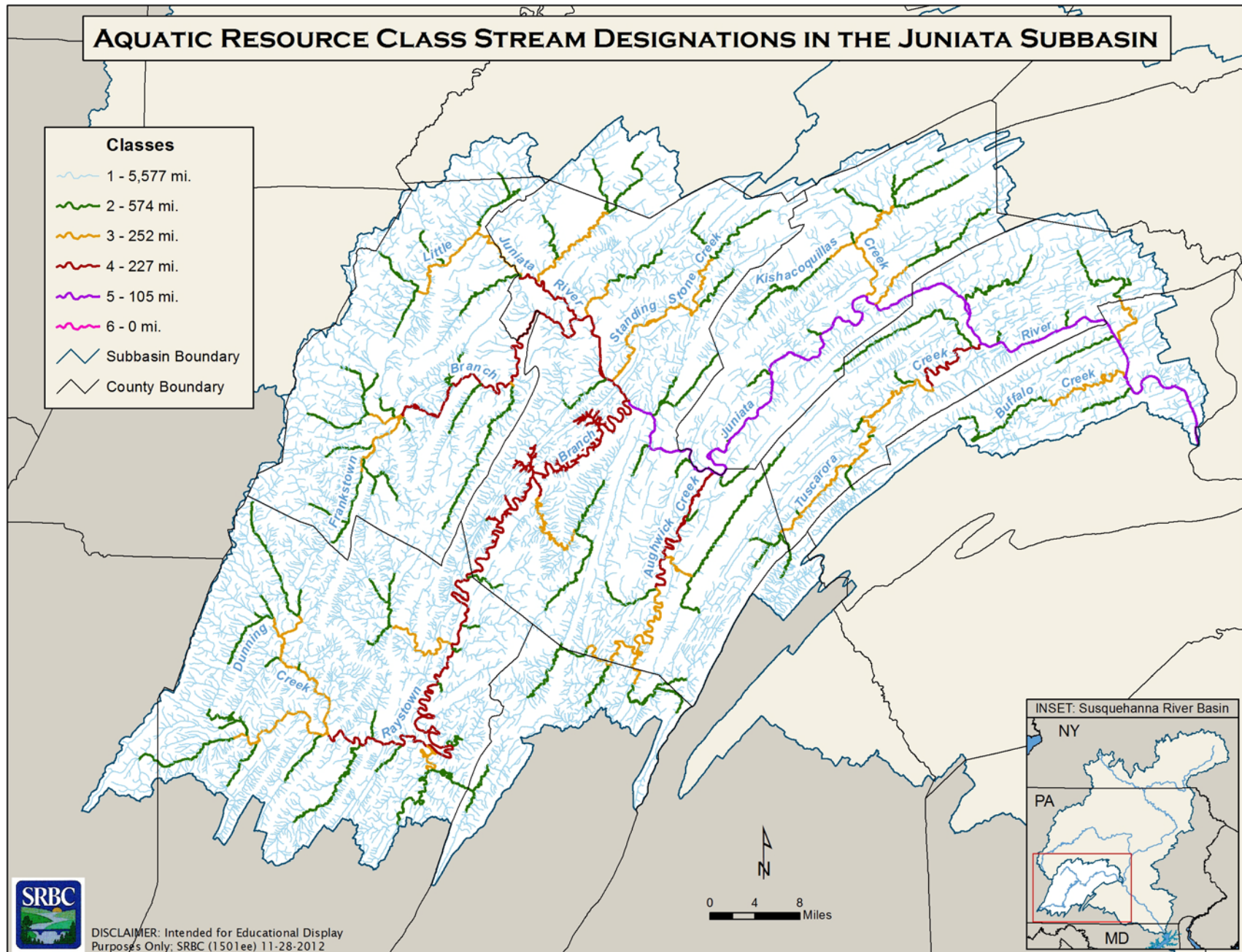


Attachment C5. Aquatic Resource Classes in the Middle Susquehanna Subbasin

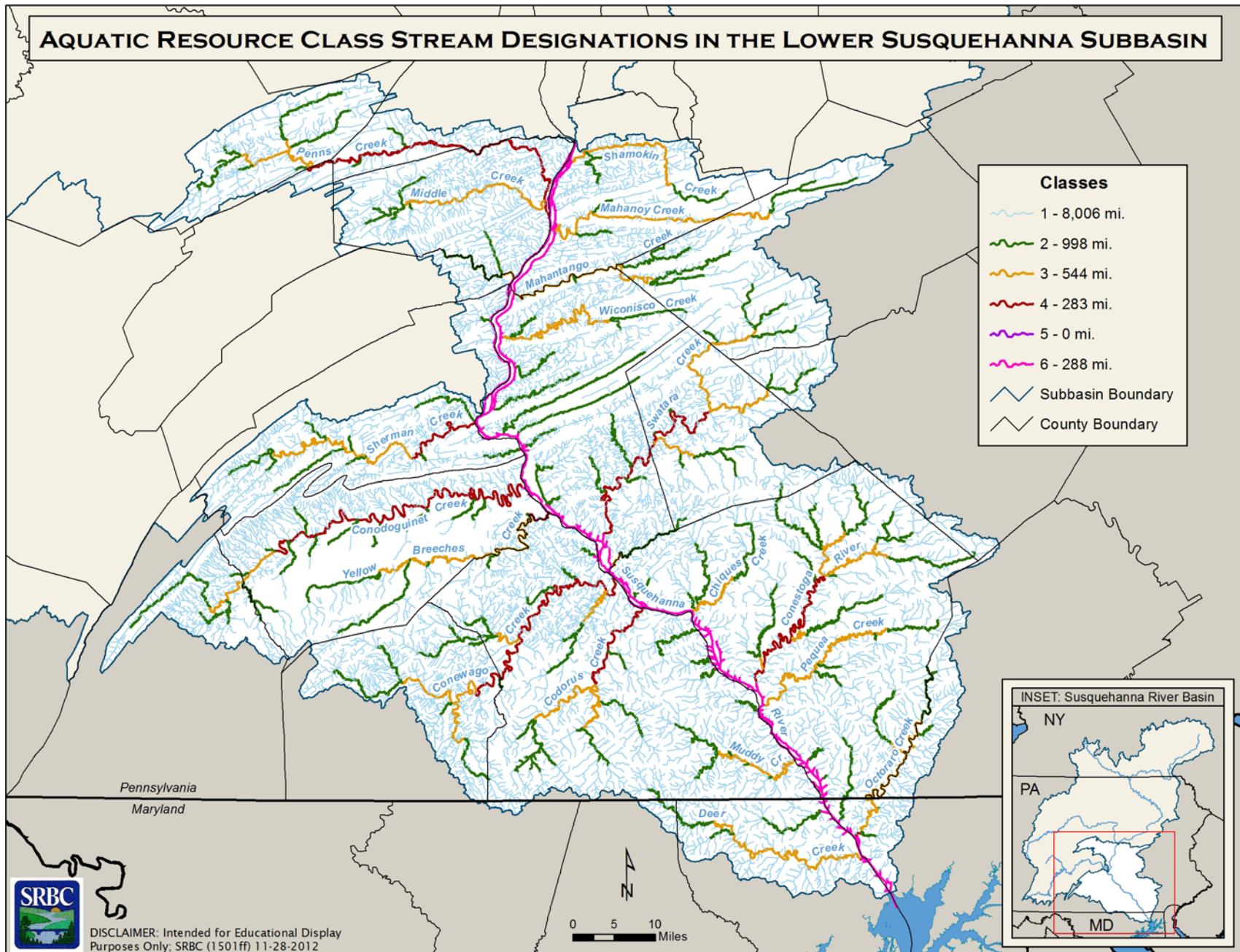




Attachment C6. Aquatic Resource Classes in the Juniata Subbasin



Attachment C7. Aquatic Resource Classes in the Lower Susquehanna Subbasin





*Attachments D and E. United States Geological Survey (USGS) Reference Stream Gaging Stations and Monthly Percent Exceedance (Px) Flow Values (computed using entire period of record through March 2020)*

*Link Address:*

<https://www.srbc.net/regulatory/policies-guidance/docs/low-flow-protection-attachment-e-f.xlsx>

*Navigational Path: [www.srbc.net](http://www.srbc.net) → Regulatory → Policies & Guidance →*

*Policies → Technical Guidance Attachments D and E*