



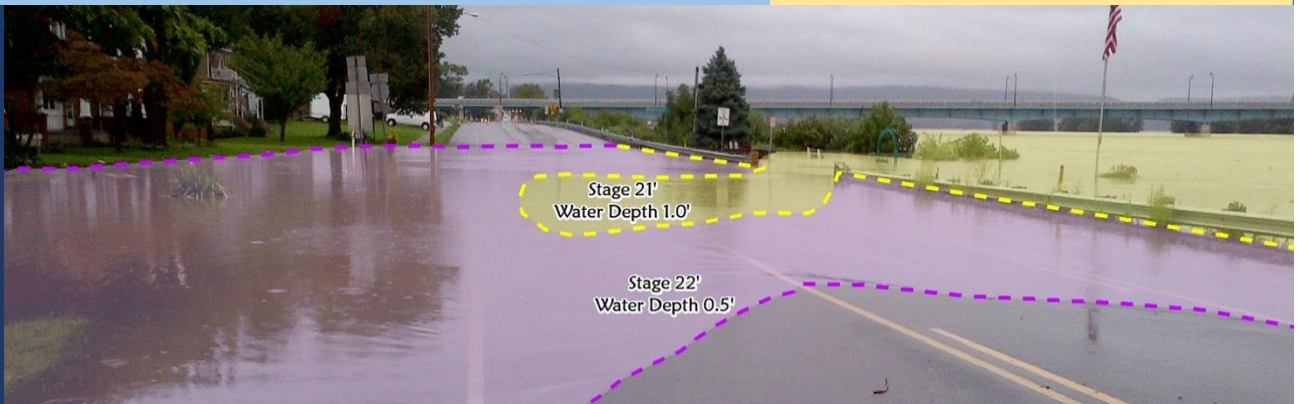
CHEN6

CHEMUNG RIVER at ELMIRA, NEW YORK

(USGS Gage No. 01530332)

Flood inundation maps, available online for this location, provide emergency managers, government officials, and the public an effective tool to prepare for, respond to, and recover from a significant flood event.

FLOOD INUNDATION MAPPING TOOL



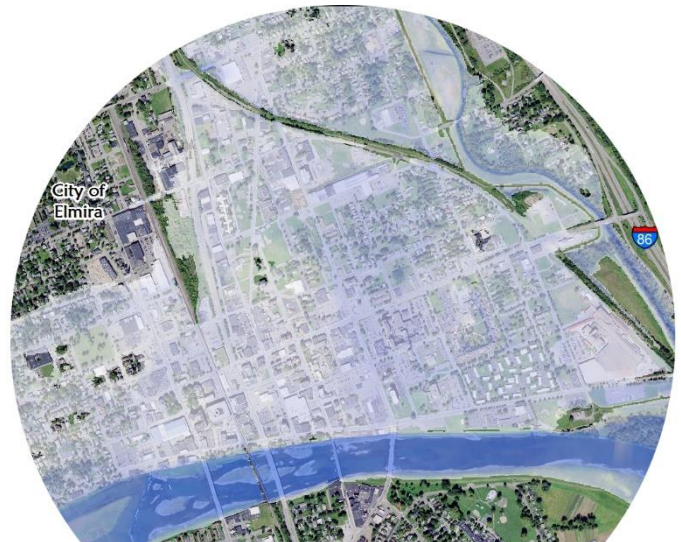
[Find your stage map here!](#)

HOW IT WORKS

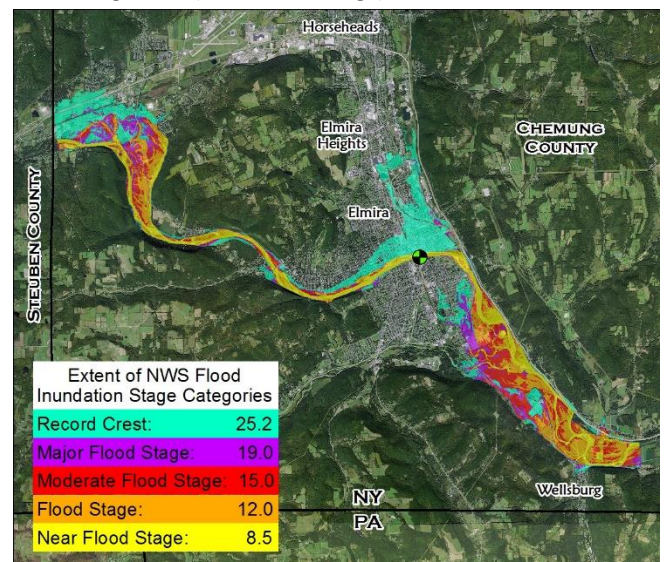
River Flooding: The National Weather Service (NWS) issues river forecasts based on expected rainfall and river conditions in the watershed. Based on the forecast from NWS, you can view a map that most closely resembles the predicted extent of the flood.

MAP ACCESS INSTRUCTIONS

1. Google "NWPS Inundation Mapping."
2. Select link for "National Water Prediction Service – NOAA."
3. In the search bar, enter the gage identifier "CHEN6" to zoom to its location.
4. Click on the gage on the map, and navigate to the "Full Information" page, linked at the top center of the window on the right.
5. Scroll down to the "Gauge Location" map and check the box next to "Activate CHEN6 Partner FIM."
6. Select stage of interest from the column on the left to view expected inundation with that stage.



The map above shows the extent and depth of a flood resulting from stage 25.2' (record flood stage) at Elmira, NY.



US Army Corps
of Engineers.

